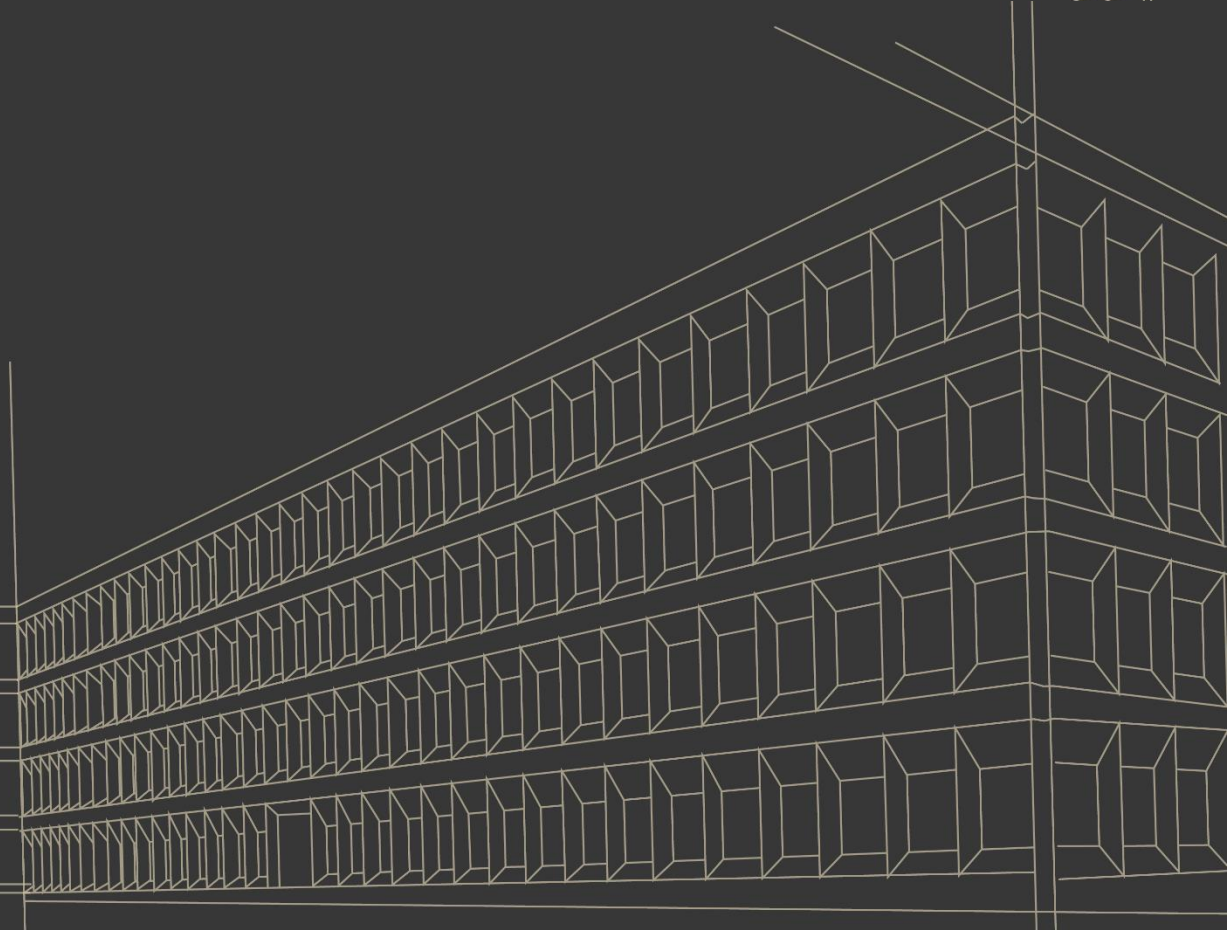


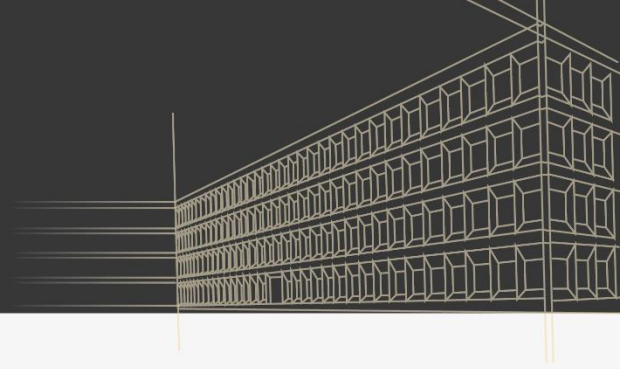
Brazilian SAI's approach to oversight Government measures in response to Covid-19 crisis



The case of social protection

Special Plan: Message of Cooperation

Principles and Values



Increase timeliness with monthly reports

Reduce burden on auditees with less meetings

Work remotely using data analysis

Special Plan: timely and comprehensive April to September of 2020



31
ongoing audits

81
investigations

1 hot site
2 data panels

+100 reports

Data visualization of TCU's engagements

Filters

Each policy

Each Government department

Each engagement

Each TCU's department



Federal Government's responses to Covid-19



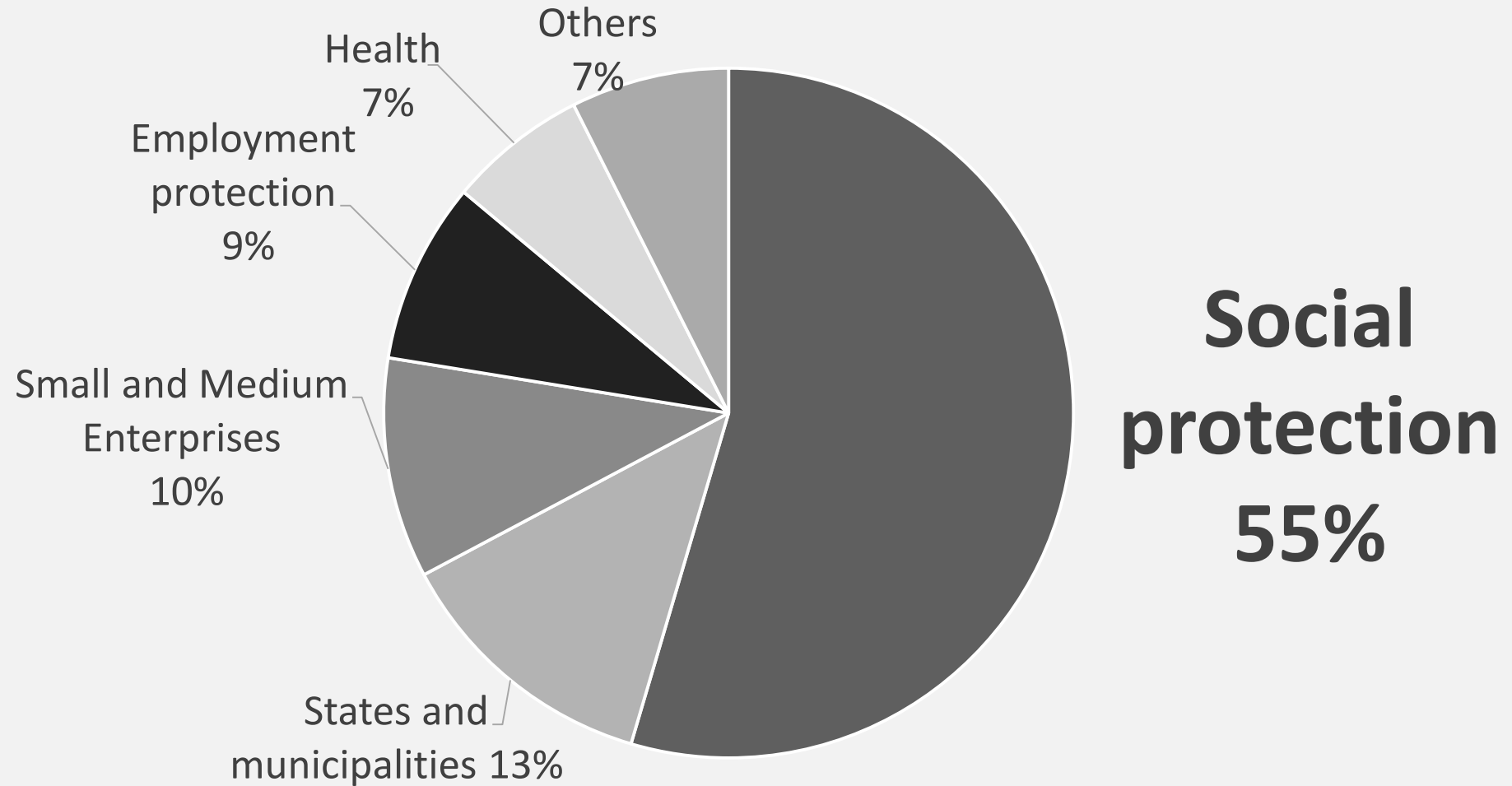
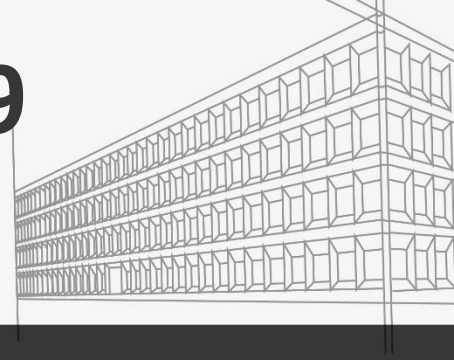
Budget
expenses
USD 120 bn

Tax measures
USD 26 bn

Credit
measures
USD 46 bn

Federal Government's responses to Covid-19

Budget expenses: 120 bn



Federal Government's responses to Covid-19

Social protection: emergency cash transfer



67 million
people

40% of Brazilian
families

April to
December

5 months

USD 120

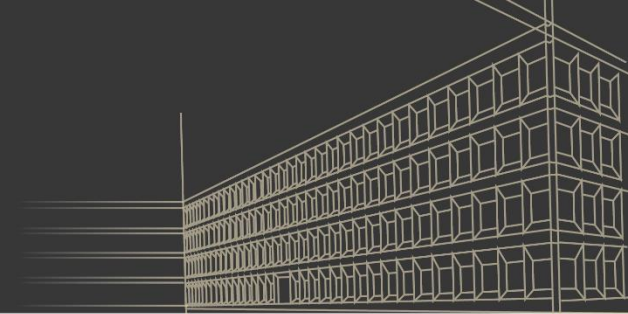
1 to 3 vouchers by
family

4 months

USD 60

1 or 2 vouchers by
family

Oversight approach of Coronavoucher



1st ongoing audit

- Budget implementation and risks
- Estimates of wrong inclusion and exclusion

2nd ongoing audit

- Data analysis to check eligibility
- Data credibility
- Data Panel to disclosure results

Investigation and legal decisions

- Military personel receiving
- Lack of Tax Authority data bases

Data Panel Filters

Expenses and Beneficiaries each month

Types of Improper Payments

Detailed information

By State



Main findings



Estimate of Improper
Inclusion:

9,6%

USD 6 bn

Detected Improper Payments:

1%

USD 640 M

Estimate of Improper
Exclusion:

5%

3,3 M people

More IDs than population:

12 million

(6% of population)

Main recommendations



Stop paying wrong beneficiaries

Review eligibility monthly

Develop an easy way to get reimbursement

Include more databases

Include new approaches to get applications to the benefit

Thank you!

Tiago Dutra
Head of Department
Tax, Pension & Welfare

